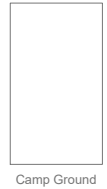


- Move In Schedule**
- Tuesday AM
  - Tuesday PM
  - Wednesday AM
  - Wednesday PM



**Legend;**  
 8,x8' booths - 604-607, 616-619  
 8'x10' booths - 300's, and 500's  
 50' x 30' booths - Outdoor Booths  
 As Dimensioned - Bulk Spaces  
 10x10 booths - Remaining



Event Specialists  
 780.992.0404  
 Fort Saskatchewan and Airdrie, AB.  
[www.superiorshow.com](http://www.superiorshow.com)  
 Serving communities  
 through Superior events



# Peace Country Agri-Classic

March 7-9, 2019

The Entrec Centre - Evergreen Park

Floor plan is intended for the sole use of our Clients and is subject to change.

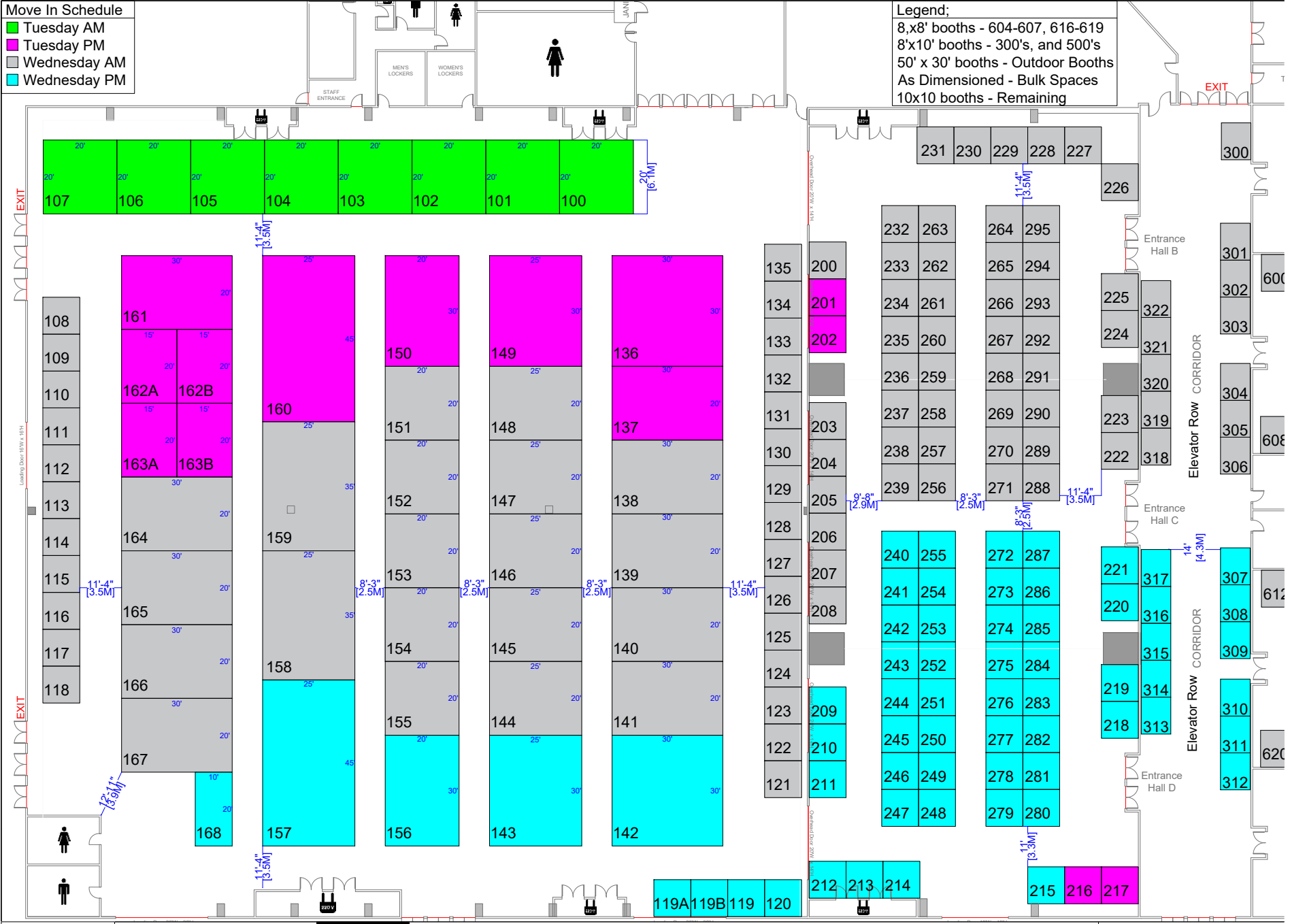
Revised By E.O. on Jul. 25/18

**Move In Schedule**

- Tuesday AM
- Tuesday PM
- Wednesday AM
- Wednesday PM

**Legend:**

- 8,x8' booths - 604-607, 616-619
- 8'x10' booths - 300's, and 500's
- 50' x 30' booths - Outdoor Booths
- As Dimensioned - Bulk Spaces
- 10x10 booths - Remaining



Event Specialists  
 780.992.0404  
 Fort Saskatchewan and Airdrie, AB.  
 www.superiorshow.com  
 Serving communities  
 through Superior events



# Peace Country Agri-Classic

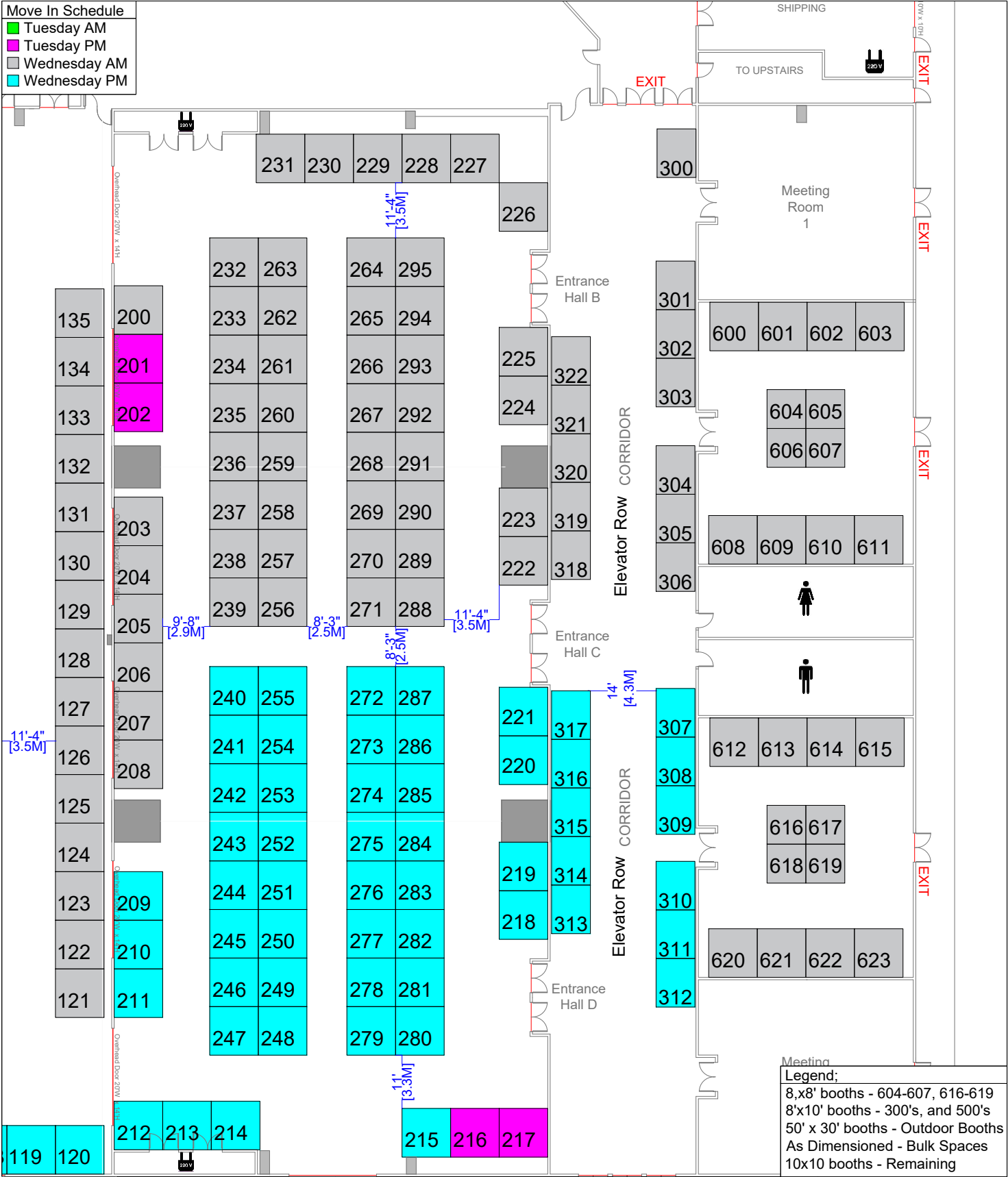
March 7-9, 2019

The Entrec Centre - Evergreen Park

Floor plan is intended for the sole use of our Clients and is subject to change.

Revised By E.O. on Jul. 25/18

| Move In Schedule |              |
|------------------|--------------|
| ■                | Tuesday AM   |
| ■                | Tuesday PM   |
| ■                | Wednesday AM |
| ■                | Wednesday PM |



| Meeting Legend; |                           |
|-----------------|---------------------------|
| 8,x8'           | booths - 604-607, 616-619 |
| 8'x10'          | booths - 300's, and 500's |
| 50' x 30'       | booths - Outdoor Booths   |
| As Dimensioned  | - Bulk Spaces             |
| 10x10           | booths - Remaining        |



Event Specialists  
 780.992.0404  
 Fort Saskatchewan and Airdrie, AB.  
 www.superiorshow.com  
 Serving communities  
 through Superior events

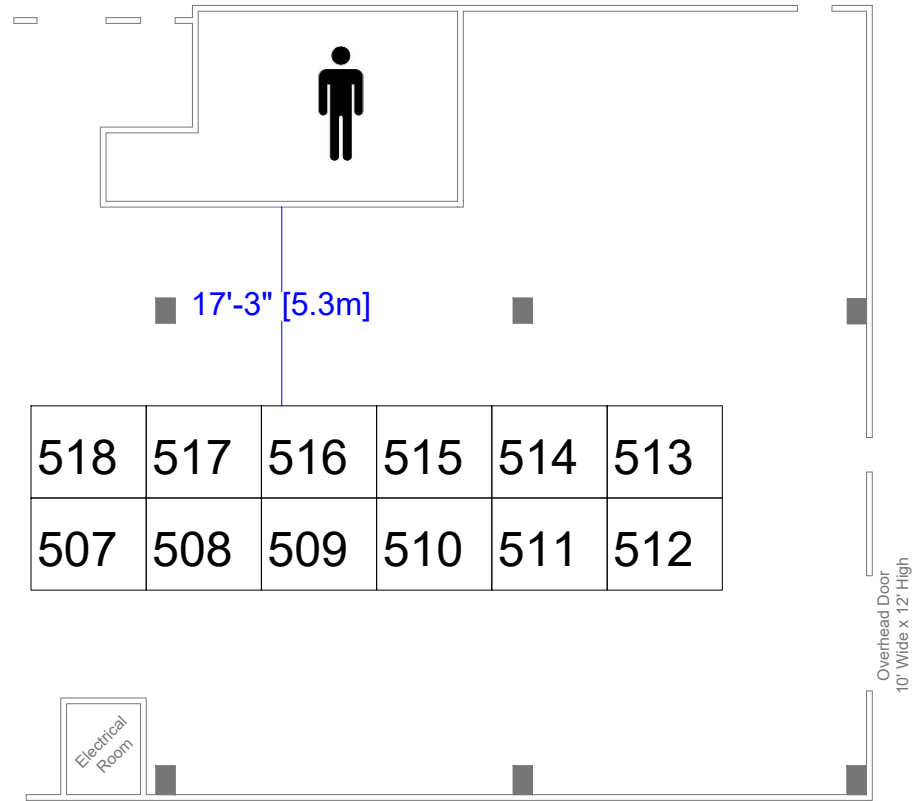
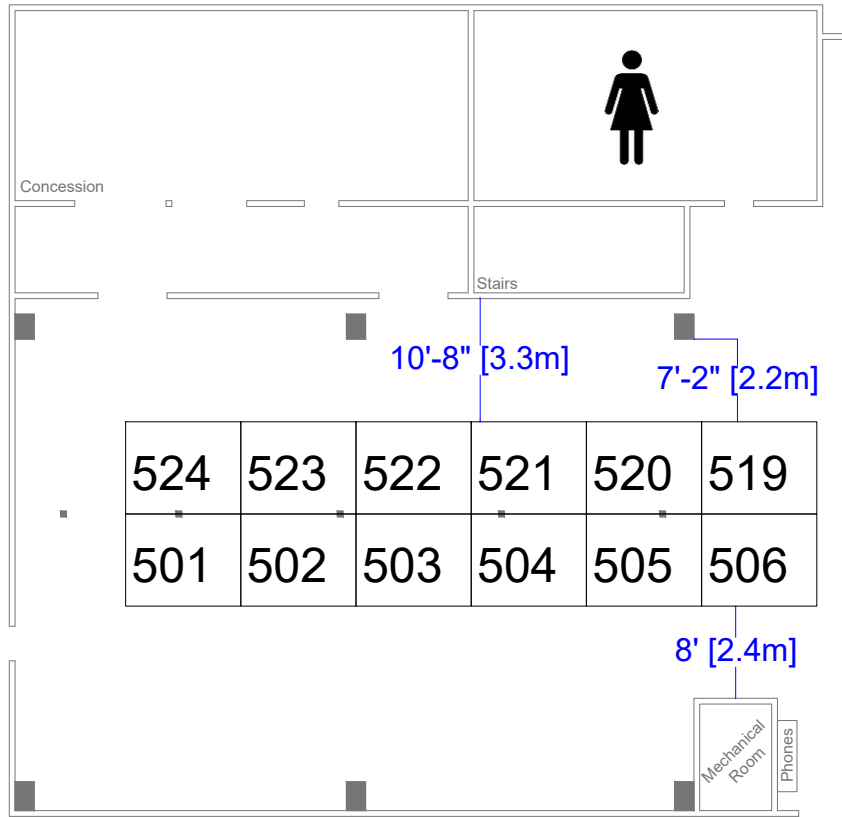
# Peace Country Agri-Classic

March 7-9, 2019

The Entrec Centre - Evergreen Park

Floor plan is intended for the sole use of our Clients and is subject to change.

Revised By E.O. on Jul. 25/18



**Legend;**  
 8,x8' booths - 604-607, 616-619  
 8'x10' booths - 300's, and 500's  
 50' x 30' booths - Outdoor Booths  
 As Dimensioned - Bulk Spaces  
 10x10 booths - Remaining



Event Specialists  
 780.992.0404  
 Fort Saskatchewan and Airdrie, AB.  
 www.superiorshow.com  
 Serving communities  
 through Superior events



# Peace Country Agri-Classic

March 7-9, 2019

The Gordon Badger Stadium - Evergreen Park

Revised By E.O. on Jul. 25/18

Floor plan is intended for the sole use of our Clients and is subject to change.